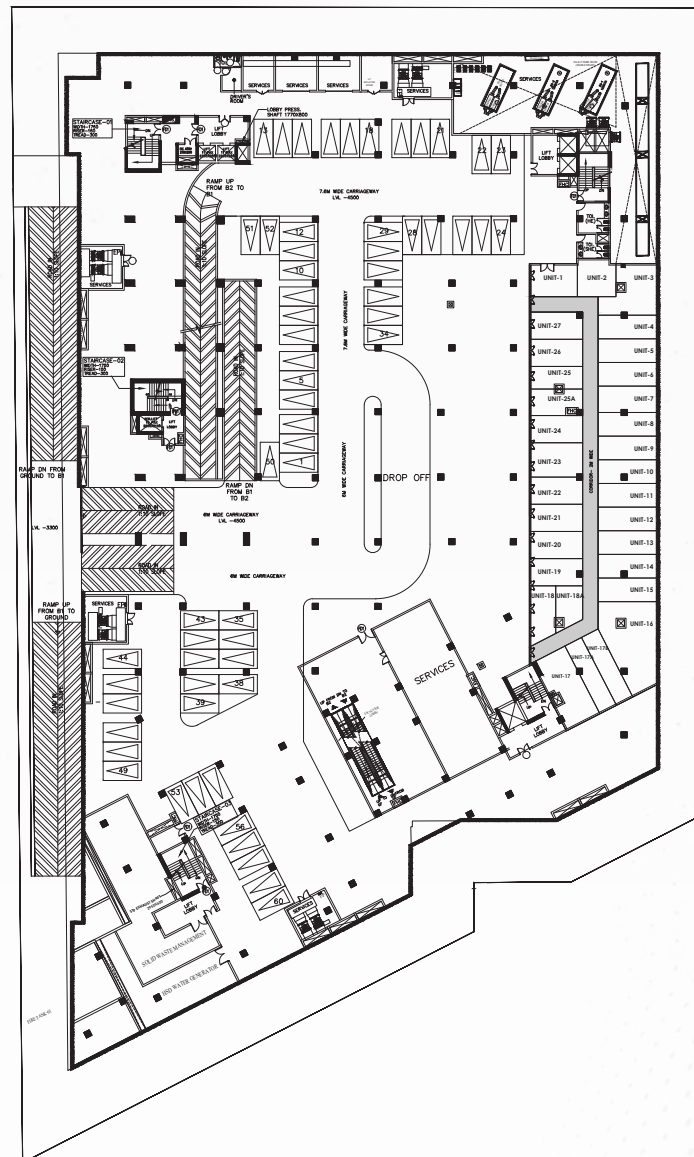




WE BRING *Joy* TO REAL ESTATE

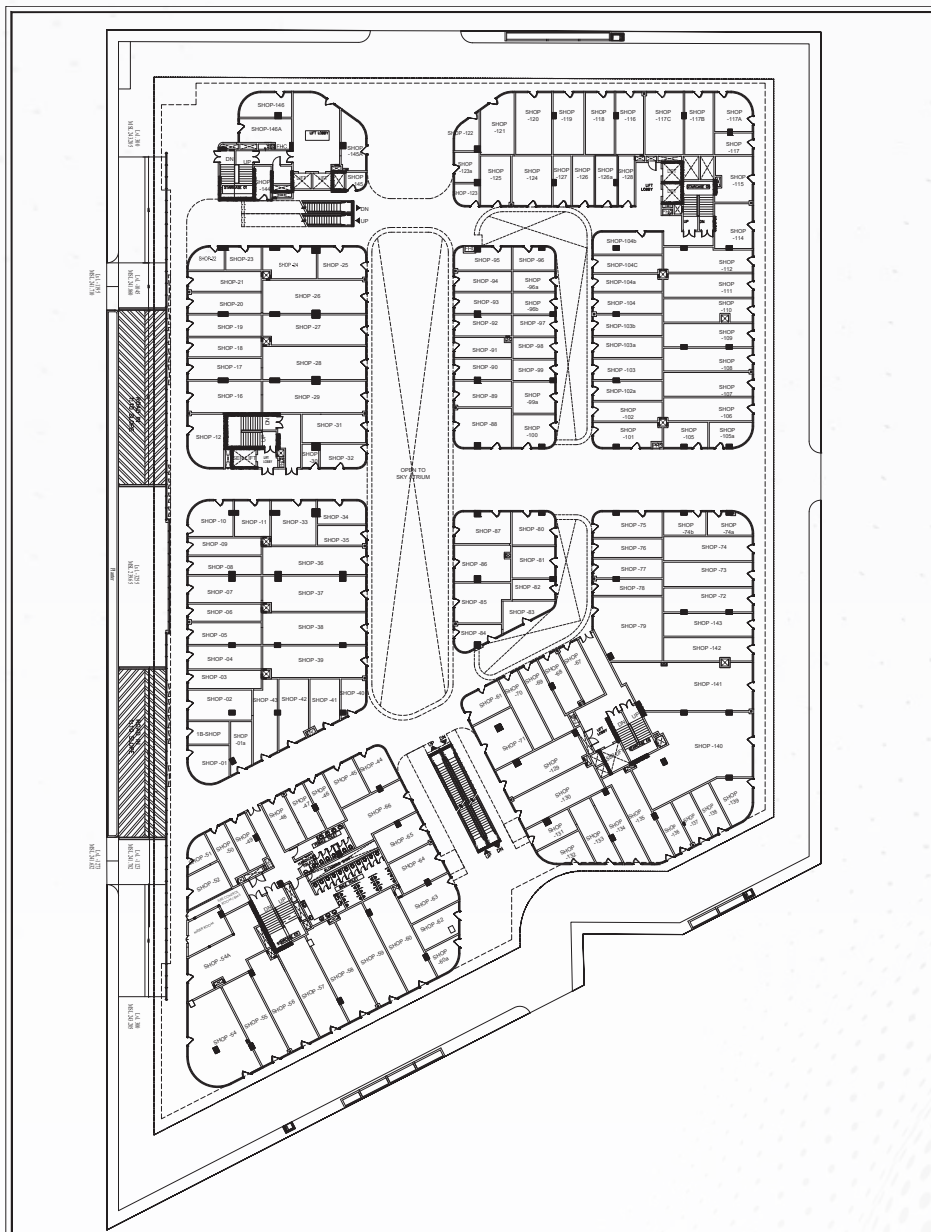


BASEMENT FLOOR



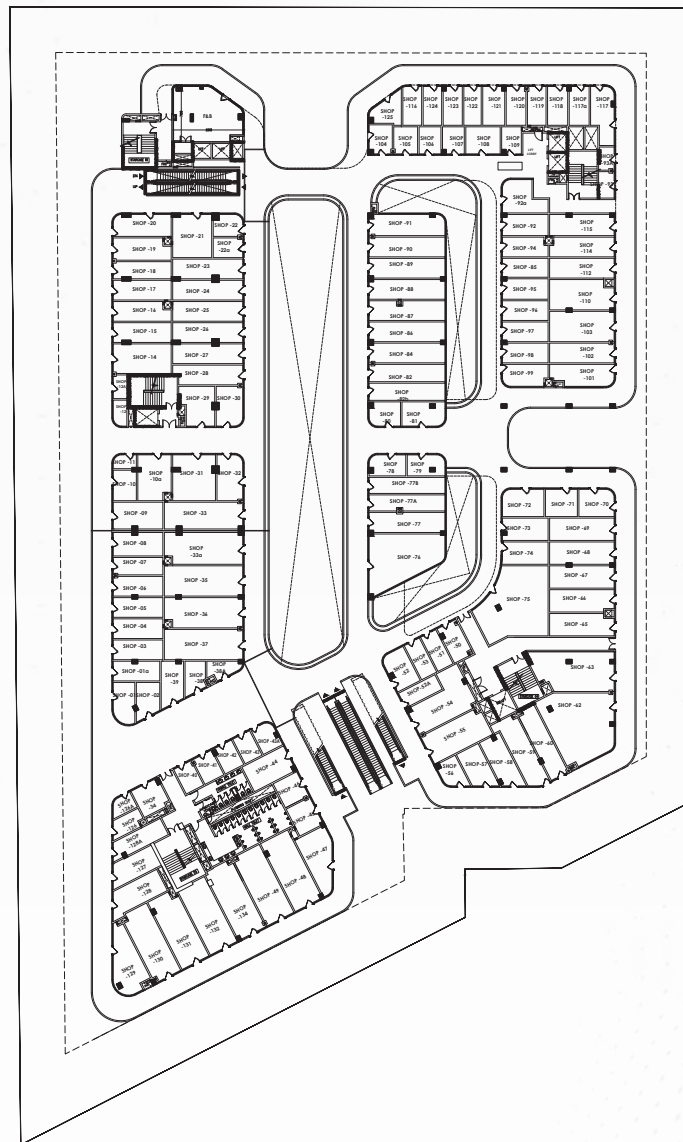


GROUND FLOOR





FIRST FLOOR

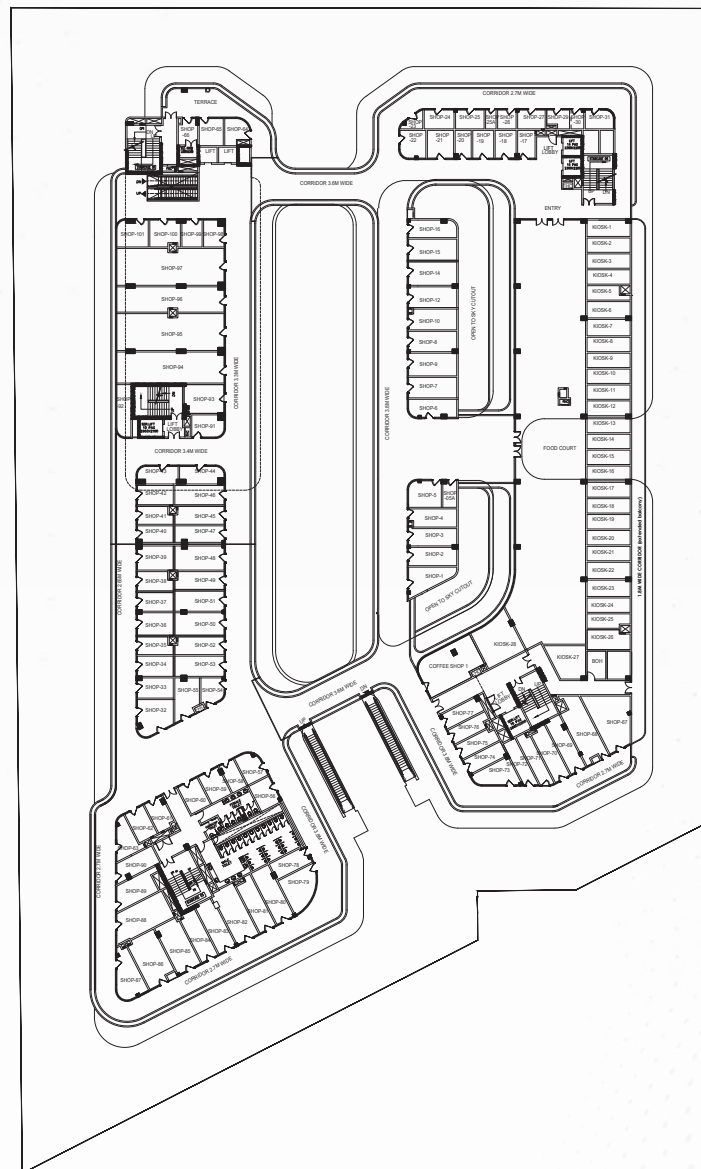




**ANANT RAJ
ESTATE**

The logo for JOYSQUARE, featuring the word "JOYSQUARE" in a bold, pink, sans-serif font. The letters are slightly shadowed, giving them a 3D appearance as if they are floating above a surface. The background of the slide is a light blue with a pattern of overlapping, semi-transparent circles in various colors (green, yellow, orange, red, purple) that create a bokeh or bubble effect.

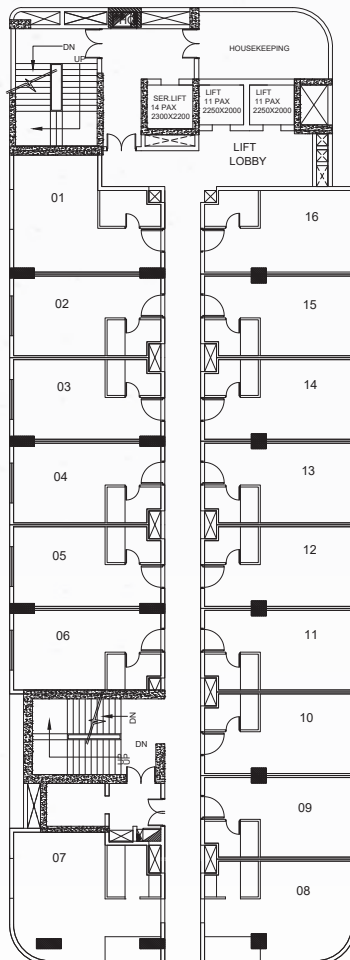
SECOND FLOOR



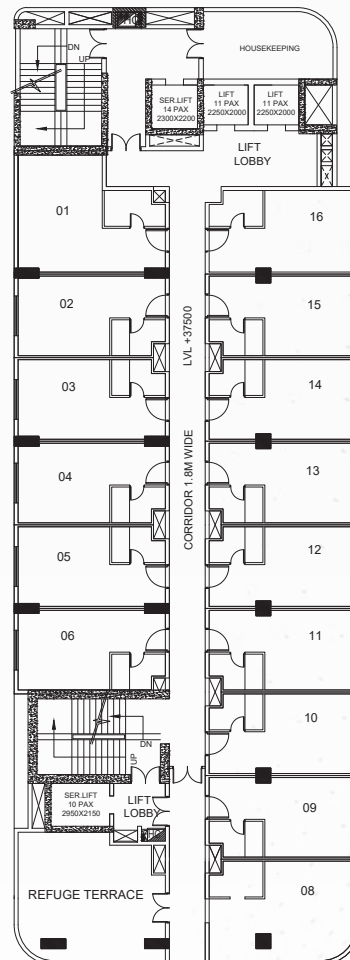
WE BRING *Joy* TO REAL ESTATE



TYPICAL FLOOR



TYPICAL FLOOR
(3rd, 4th, 6th, 7th & 8th)



TYPICAL FLOOR
[Refuge Terrace]
(5th & 9th)